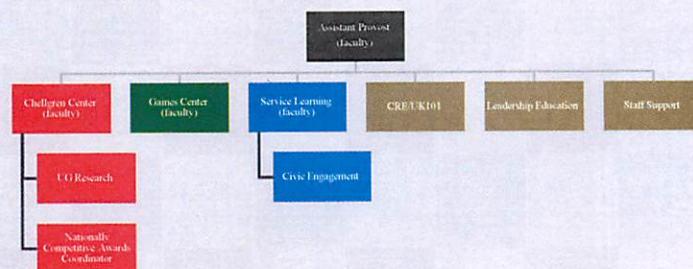


## Student and Academic Life Retreat

May 10, 2017  
The 90; Private Dining Room  
8 a.m. to noon



## Academic Enrichment



## Unit Mission

The mission of units and programs in Academic Enrichment is to embellish, augment, and **expand educational opportunities** for UK students. These opportunities transcend the curricula of the colleges and UK Core. Academic enrichment opportunities enable students to attain a kind of education that maximizes career success while also inspiring life long learning, civic engagement, and pursuit of a meaningful and fulfilling life. Successful academic enrichment not only provides personal benefits to students, it also serves society by producing students with the creativity, confidence, and skills to become leading citizens. The core components of the Academic Enrichment area include the *Gaines Center for Humanities*, the *Chellgren Center for Undergraduate Excellence*, *Service Learning & Community Outreach*, and collaborations with other SAL units engaged with Student Leadership, UK 101, and the Common Reading Program.



## Gaines Center

1984

- Gaines Undergraduate Humanities Fellowship Program
- Curricular Development & Academic Support Programming
  - Bingham Seminar (faculty & student support for embedded-travel course)
  - Breathitt Undergraduate Lecture
- Public Programming
  - Lafayette Seminar in Public Issues
  - Bale Boone Symposium in the Humanities

see blue.



## **Chellgren Center**

2006

- Endowed Chair & Professorships (5)
- Honorary Societies (PBK PKP)
- Office of Undergraduate Research
- Office of Nationally Competitive Awards
- Faculty Learning Communities
- Chellgren Student Fellows Program

**see blue.**

## **Service Learning (S-L) & Civic Engagement (CE)**

- Joining these 2 units from academic and student affairs will strengthen the work of both
- Todd Stoltzfus is newly hired liaison working with Service-Learning team and the Center for Community Outreach (CCO) organizations/staff
- See our new website at

[ServeLearnConnect.uky.edu](http://ServeLearnConnect.uky.edu). **see blue.**

## Collaborations

- Student Leadership
- UK 101
- Common Reading Experience

seeblue.